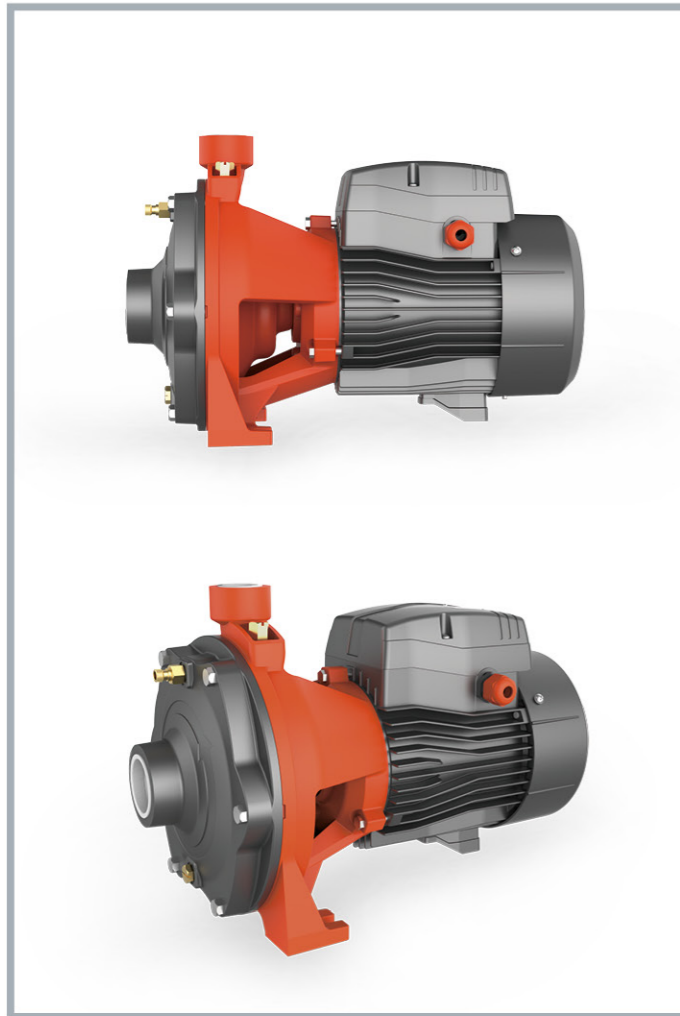


ACm
Multistage Centrifugal Pump



Application

- Can be used to transfer clean water or other liquids similar to water in physical and chemical properties
- Suitable for industrial use and urban water supply, pressure boosting for high buildings and fire fighting, garden irrigation, long-distance water transfer, heating ventilation and air conditioning, circulation and pressure boosting for cold and hot water, and supporting equipment etc.

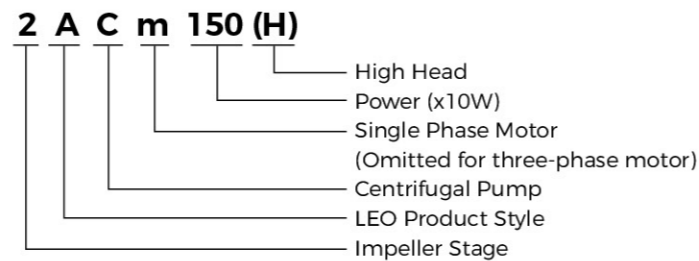
Pump

- Cast iron pump body and support under special anti-rust treatment
- AISI 304 shaft
- Max. liquid temperature: +60°C
- Max.suction: + 8 m

Motor

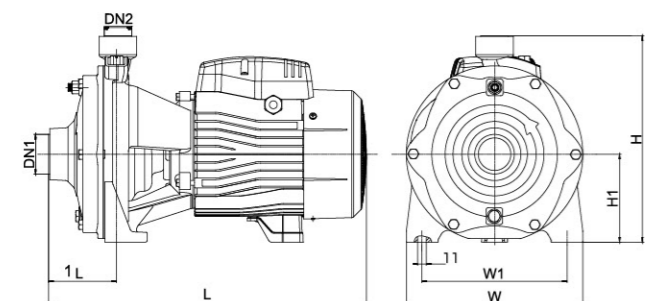
- Low noise&Long life bearing
- Motor with copper winding
- Built-in thermal protector for single phase motor
- Insulation class: F
- Enclosures class: IPX4
- Max. ambient temperature: +50°C
- IE 2 motor (Three phase, power ≥ 0.75kW)

Identification Codes



Technical Data

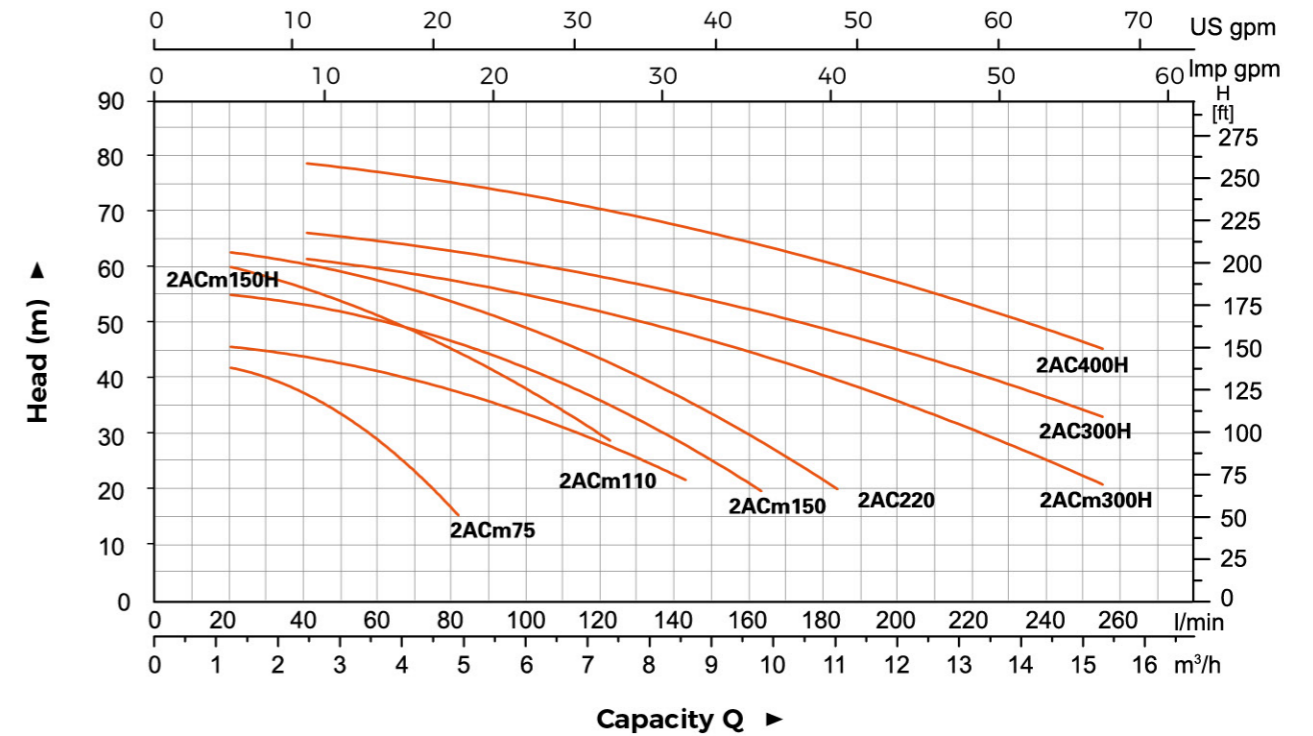
Model		Power		Q(m³/h)																			
Single Phase	Three Phase	kW	HP	0	1.2	1.8	2.4	3	3.6	4.2	4.8	5.4	6	6.6	7.2	8.4	9.6	10.8	12	15			
				Q(l/min)	0	20	30	40	50	60	70	80	90	100	110	120	140	160	180	220	250		
2ACm75	2AC75	0.75	1	H (m)	45	42.5	40	37	33.5	28.5	23	15	-	-	-	-	-	-	-	-	-	-	
2ACm110	2AC110	1.1	1.5		47	46	45	44	43	41.5	40	38	35.5	33	30.5	28	22	-	-	-	-	-	-
2ACm150	2AC150	1.5	2		57.5	55.5	54.5	53.5	52	50.5	49	47	44.5	41.5	38.5	35	28	20	-	-	-	-	-
2ACm150H	2AC150H	1.5	2		63.5	60.5	58.5	56.5	54	51.5	48.5	45	41	37.5	33.5	29	-	-	-	-	-	-	-
-	2AC220	2.2	3		65	63	62	61	59.5	58	56	54	51.5	49	46	43	36	28.5	20.5	-	-	-	-
2ACm300H	-	3	4		65	-	-	62	61	60	59	58	56.5	55	53.5	52.5	48.5	44.5	40	35	21	-	-
-	2AC300H	3	4		70	-	-	67	66	65	64	63	62	61	59.5	59	55.5	52	49	45	33	-	-
-	2AC400H	4	5.5		82	-	-	79.5	78.5	77.5	76.5	75.5	74.5	73.5	72	71	67.5	64.5	61	57	45.5	-	-



Dimension

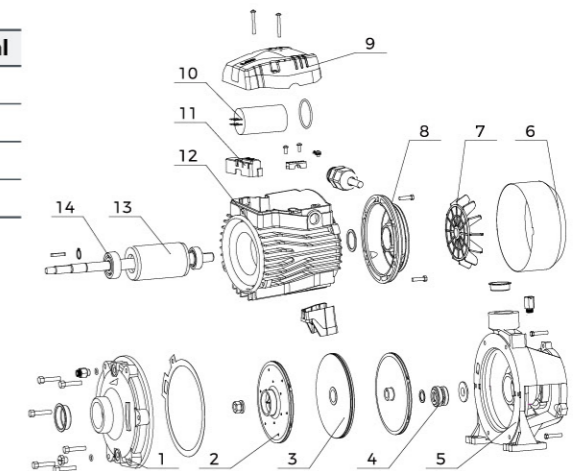
Model	DN1	DN2	L (mm)	L1 (mm)	H (mm)	H1 (mm)	W (mm)	W1 (mm)
2AC(m)75	1 1/4"	1"	337	72	231	100	181	145
2AC(m)110	379		78	225	92.5	200	162	
2AC(m)150	1 1/2"	1"	402	88	263	112	225	185
2AC(m)150H								
2AC220	1 1/4"	1"	481	99	311	132	281	234
2ACm300H								
2AC300H								
2AC400H								

Hydraulic Performance Curves



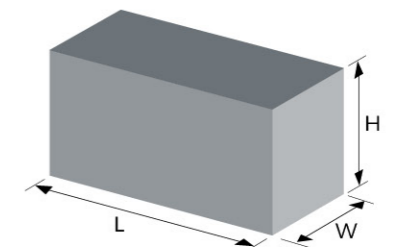
Material Table

No.	Part	Material	No.	Part	Material
1	Pump body	HT200	11	Terminal board	
2	Impeller	HPb59-1	12	Stator	
3	Water baffle	HT200	13	Rotor	
4	Mechanical seal		14	Deep groove ball bearing	
5	Bracket	HT200			
6	Fan cover	PP			
7	Fan	PP-GF10			
8	End plate	ADC12			
9	Cover box	PP-GF20			
10	Capacitor				



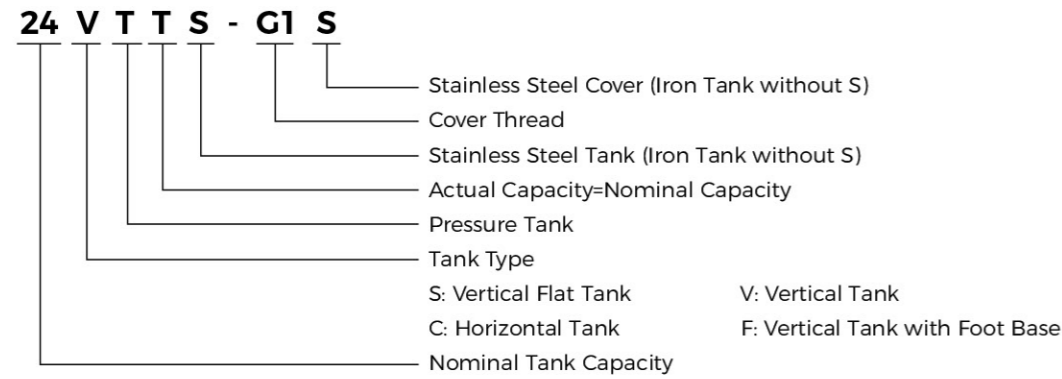
Package Information

Model	GW (Kgs)	L (mm)	W (mm)	H (mm)	Quantity (PCS/20'TEU)
2AC(m)75	16.8	385	215	270	1190
2AC(m)110	22	430	235	275	833
2AC(m)150	26.4	445	255	300	636
2AC(m)150H	27	445	255	300	636
2AC220	27.5	445	255	300	629
2ACm300H	49	542	330	360	337
2AC300H	48.6	542	330	360	340
2AC400H	48.5	542	330	360	346



Accessories

Identification Codes



Tank



Model	Max. Pressure (bar)	Nominal Capacity (L)	Actual Capacity (L)	Membrane	Max. Temp (°C)	Connection
24ST	8	24	20	Epdm	60	G1"
24STT	8	24	24	Epdm	60	G1"



Model	Max. Pressure (bar)	Nominal Capacity (L)	Actual Capacity (L)	Membrane	Max. Temp (°C)	Connection
2VT	8	2	2	Epdm	60	G1/2"
4VT	8	4	4	Epdm	60	G1"
5VT	8	5	5	Epdm	60	G1"
8VT	8	8	8	Epdm	60	G1"
19VT	8	19	18	Epdm	60	G1"
24VT	8	24	20	Epdm	60	G1"
24VTT	8	24	24	Epdm	60	G1"



Model	Max. Pressure (bar)	Nominal Capacity (L)	Actual Capacity (L)	Membrane	Max. Temp (°C)	Connection
19CT	8	19	18	Epdm	60	G1"
24CT	8	24	20	Epdm	60	G1"
24CTT	8	24	24	Epdm	60	G1"

*For capacity < 50L, pressure gauge is optional.
For capacity ≥ 50L, pressure gauge is standard.

Tank



Model	Max. Pressure (bar)	Nominal Capacity (L)	Actual Capacity (L)	Membrane	Max. Temp (°C)	Connection
50CT	8	50	36	Epdm	60	G1"
50CTT	8	50	50	Epdm	60	G1"
60CTT	8	60	60	Epdm	60	G1"
100CT	8	100	80	Epdm	60	G1"
100CTT	8	100	100	Epdm	60	G1"



Model	Max. Pressure (bar)	Nominal Capacity (L)	Actual Capacity (L)	Membrane	Max. Temp (°C)	Connection
50FT	8	50	36	Epdm	60	G1"
50FTT	8	50	50	Epdm	60	G1"
60FTT	8	60	60	Epdm	60	G1"
100FT	8	100	80	Epdm	60	G1"
100FTT	8	100	100	Epdm	60	G1"
200FTT	8	200	200	Butyl	60	G1½"
300FTT	8	300	300	Butyl	60	G1½"
500FTT	8	500	500	Butyl	60	G1½"

*For capacity < 50L, pressure gauge is optional.
For capacity ≥ 50L, pressure gauge is standard.

3-Way / 5-Way



Model	Connection	Length
3TA	G1"	70 , 80
5TA	G1"	80 , 90
5TB	G1"	80 , 90

Foot Valve



FVA

Model	Connection
FVA1	1"
FVA1.25	1¼"
FVA1.5	1½"
FVA2	2"
FVA3	3"

- Stainless Steel mesh
- Can be used as a check valve

Accessories

Flexible Hose



Model	FH12.8-01(L=128mm)	FH44-03(L=440mm)
Inlet	G3/4"	G1"
Outlet	G3/8"	G1"
Material	Stainless steel wire	
Operating Limits	Fluid temperature up to 35°C Max. ambient temperature 40°C	

Filter



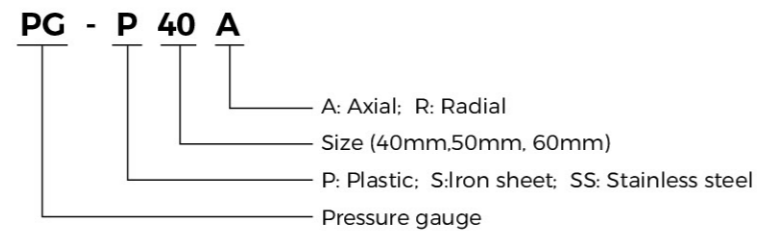
Model	WF-01B	WF-02B
Inlet/Outlet	1" x 1"	1" x 1"
Capacity	1L	2L
Max. Pressure	5 bar	5 bar
Operating Limits	Fluid temperature up to 35°C Max. ambient temperature 40°C	

Pressure Gauge



Axial

Radial



- Two connection types: (1) G1/4" (2) M10x1
- For 40mm gauge, the scale: 0 - 6 bar
- For 50mm gauge, the scale: 0 - 10 bar or 0 - 6 bar
- Back/bottom connection

Automatic Pump Controller



PS-04A

Rated Voltage	110-120VAC	220-240VAC	110-240VAC
Rated Frequency	50-60Hz		
Max. Current	10(6)A		
Max. Power(P1)	0.55kW(110-120VAC)	1.1kW(220-240VAC)	
Starting Pressure	1.0bar, 1.5bar, 2.2bar		
Max. Working Pressure	10bar		
Screw Size	R1", NPT1", G1", G1-1/4", G1-1/2"		
Protection Class	IP65		
Max. Working Temperature	60 °C		



PS-04B

Rated Voltage	110-120VAC	220-240VAC	110-240VAC
Rated Frequency	50-60Hz		
Max. Current	10(6)A		
Max. Power(P1)	0.55kW(110-120VAC)	1.1kW(220-240VAC)	
Starting Pressure	1.2bar, 1.5bar, 2.2bar		
Max. Working Pressure	10bar		
Screw Size	R1"		
Protection Class	IP65		
Max. Working Temperature	60 °C		



PS-04C

Rated Voltage	110-120VAC	220-240VAC	110-240VAC
Rated Frequency	50-60Hz		
Max. Current	10(6)A		
Max. Power(P1)	0.55kW(110-120VAC)	1.1kW(220-240VAC)	
Starting Pressure	1.2bar, 1.5bar, 2.2bar		
Max. Working Pressure	10bar		
Screw Size	G1"		
Protection Class	IP54		
Max. Working Temperature	60 °C		

* 1bar=14.50PSI

Accessories

Automatic Pump Controller



PS-04D

Rated Voltage	110-240VAC	220-240VAC	380VAC
Rated Frequency	50-60Hz		
Max. Current	30(16)A		
Max. Power(P1)	1.1kW	2.2kW	4.0kW
Starting Pressure	1.2bar, 1.5bar, 2.2bar		
Max. Working Pressure	10bar		
Screw Size	G1", G1-1/4", G1-1/2", NPT1"		G1-1/2"
Protection Class	IP65		
Max. Working Temperature	60 °C		



PS-04E

Rated Voltage	110-120VAC	220-240VAC	110-240VAC
Rated Frequency	50-60Hz		
Max. Current	30(16)A		
Max. Power(P1)	1.1kW(110-120VAC)	2.2kW(220-240VAC)	
Starting Pressure	0.8bar - 6.7bar		
Max. Working Pressure	8bar		
Screw Size	G1"		
Protection Class	IP65		
Max. Working Temperature	60 °C		



PS-04E-1

Rated Voltage	110-120VAC	220-240VAC	110-240VAC
Rated Frequency	50-60Hz		
Max. Current	30(16)A		
Max. Power(P1)	1.1kW(110-120VAC)	2.2kW(220-240VAC)	
Starting Pressure	1.5bar, 2.2bar		
Max. Working Pressure	8bar		
Screw Size	G1"		
Protection Class	IP65		
Max. Working Temperature	60 °C		

* 1bar=14.50PSI

Automatic Pump Controller



PS-04T

Rated Voltage	110-120VAC	220-240VAC	110-240VAC
Rated Frequency	50-60Hz		
Max. Current	10(6)A		
Max. Power(P1)	0.55kW(110-120VAC)	1.1kW(220-240VAC)	
Starting Pressure	1.2 - 2.5bar		
Max. Working Pressure	10bar		
Screw Size	G1"		
Protection Class	IP65		
Max. Working Temperature	60 °C		



PS-04F

Rated Voltage	220-240V		
Rated Frequency	50-60Hz		
Max. Current	16(10)A		
Max. Power(P1)	1.8kW(220-240VAC)		
Starting Pressure	0.5-3bar		
Max. Working Pressure	10bar		
Screw Size	G1"		
Protection Class	IP65		
Max. Working Temperature	60 °C		

Pressure Switch



PS-02A

Rated Voltage	110-120VAC	220-240VAC
Frequency	50/60 Hz	
Max. Current	20A	12A
Max. Power(P1)	1.6kW	1.9kW
Min. Cut-in	1 bar	
Max. Cut-out	7bar	
Starting/Stopping Pressure	bar: 1.0/2.1; 1.4/2.8; 2.1/3.5; 2.8/4.2; 3.5/4.9; 4.9/7.0	
Screw Size	Female: NPT1/4, ZG1/4 Male: NPT1/4, ZG1/4 Female revolving connector: G1/4, G3/8	
Protection Class	IP20	
Max. Working Temperature	60°C	

* Max. working pressure=Max. cut out*1.5

Accessories

Pressure Switch



PS-02B

Rated Voltage	110-120VAC	220-240VAC
Frequency	50/60 Hz	
Max. Current	20A	16A
Max. Power(P1)	1.6kW	2.6kW
Min. Cut-in	1bar	
Max. Cut-out	12bar	
Starting/Stopping Pressure	bar: 1.4/2.8; 2.1/3.5; 6.3/8.7; 9.6/12	
Screw Size	Female: NPT1/4, G1/4 Male: ZG1/4, M14 Female revolving connector: G1/4	
Protection Class	IP20	
Max. Working Temperature	60°C	



PS-02C

Rated Voltage	110-120VAC	220-240VAC	400VAC
Frequency	50/60 Hz		
Max. Current	16(8)A		
Max. Power(P1)	0.6kW	1.3kW	4.0kW
Min. Cut-in	1bar		
Max. Cut-out	5.5bar		
Starting/Stopping Pressure	bar: 1.2/2.4; 1.4/2.8; 1.5/3.0; 2.0/3.5; 3.5/4.9		
Screw Size	Female: NPT1/4, G1/4, Male: NPT1/4, G1/4, ZG1/4, Female revolving connector: G1/4, G3/8		
Protection Class	IP44		
Max. Working Temperature	60°C		



PS-02D

Rated Voltage	110-120VAC	220-240VAC
Frequency	50/60 Hz	
Max. Current	12A	
Max. Power(P1)	1.0kW	1.9kW
Min. Cut-in	1.4bar	
Max. Cut-out	6.9bar	
Starting/Stopping Pressure	bar: 1.4/2.8; 2.1/3.4; 2.8/4.1; 3.4/4.8	
Screw Size	Female: G1/4, Male: ZG1/4, G1/4, NPT1/4 Female revolving connector: G1/4, G3/8	
Protection Class	IP20	
Max. Working Temperature	60°C	

* Max. working pressure=Max. cut out*1.5

Capacitor



2 wires

2(4) terminals

Capacity(μF)	Type	Diameter(mm)	Length (mm)
6	2 wires	32	66
8	2 wires	32	66
8	4 terminals	35	72
10	2 wires	34	62
10	4 terminals	35	72
12	2 wires	40	73
16	2 wires	42	71
16	4 terminals	42	73
20	2 wires	42	74
20	4 terminals	42	74
25	2 wires	42	82
35	4 terminals	42	70
40	2 wires	42	82
40	4 terminals	45	73
42.5	2 terminals	51	100
45	2 terminals	51	100
50	2 terminals	51	100

Float Switch



FLO-01B

FLO-01B(With balance block)

Model	FLO-01B	FLO-01B(With balance block)
Specification	16(8)A 125/250V	
Cable	H07RN-F/8-F 3G1.0mm2x0.55m/0.65m/0.75m/2m/3m/5m/10m	
Lifetime	50000 cycles	
IP Protection	IP X8	
Operating Limits	Fluid temperature up to 35°C Max. ambient temperature 40°C	