

Application

- Can be used to transfer clean water or other liquids similar to water in physical and chemical properties
- Suitable for lifting water from the well, sprinkling irrigation in garden, pressure boosting of running water, and supporting equipment etc.

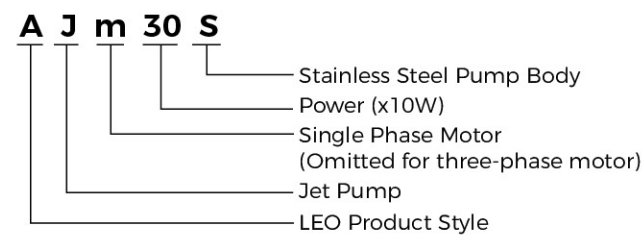
Pump

- Stainless steel pump body
- Support under special anti-rust treatment
- Stainless steel impeller
- AISI 304 shaft
- Max. liquid temperature: +60°C
- Max. suction: +9 m

Motor

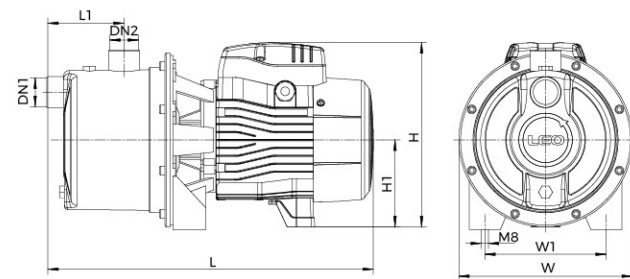
- Low noise & Long life bearing
- Motor with copper winding
- Built-in thermal protector for single phase motor
- Insulation class: F
- Enclosures class: IPX4
- Max. ambient temperature: +50°C

Identification Codes



Technical Data

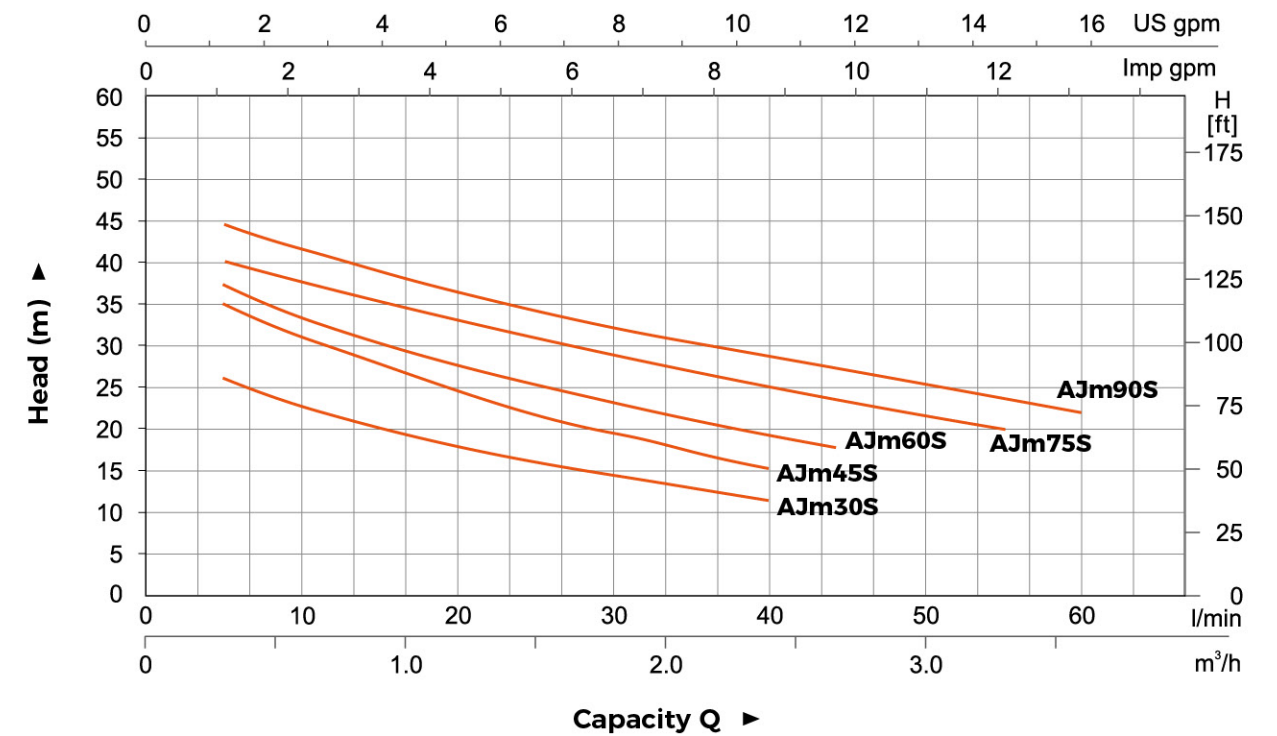
Model	Power		Q(m³/h)	Q(l/min)															
	kW	HP		0	0.3	0.6	0.9	1.2	1.5	1.8	2.1	2.4	2.8	3.0	3.3	3.6			
AJm30S	0.3	0.4	H (m)	30	26	23	20	18	16.5	15	13	11	-	-	-	-			
AJm45S	0.45	0.6		38	35	31	27	25	22	20	19	16	-	-	-	-			
AJm60S	0.6	0.8		42	37	33	30	27	25	23	21	20	18	-	-	-			
AJm75S	0.75	1.0		47	40	38	36	34	32	30	28	27	25	23	20	-			
AJm90S	0.9	1.2		48	44	42	39	37	35	34	32	31	29	28	26	22			



Dimension

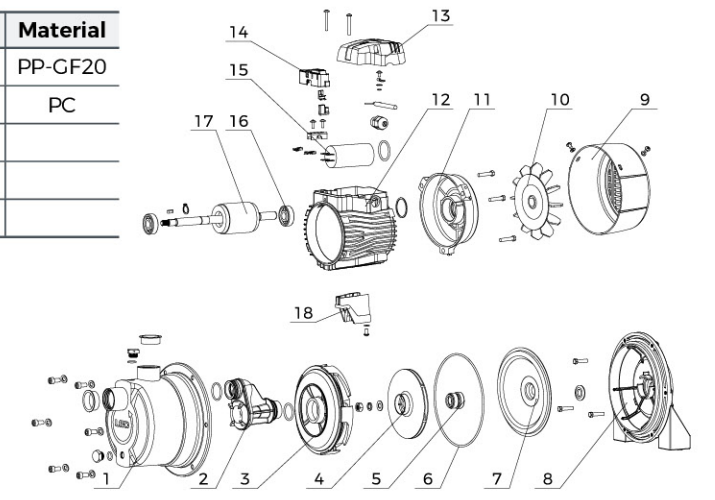
Model	DN1	DN2	L (mm)	W (mm)	H (mm)	L1 (mm)	W1 (mm)	H1 (mm)
AJm30S	1"	1"	229	180	181.5	75	140	92
AJm45S			229	180	181.5	75	140	92
AJm60S			385	200	213	88	140	103
AJm75S			385	200	213	88	140	103
AJm90S			385	200	213	88	140	103

Hydraulic Performance Curves



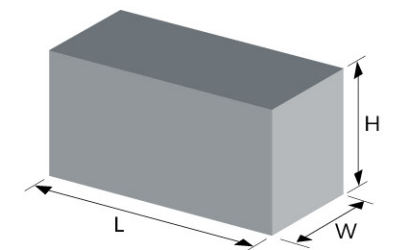
Material Table

No.	Part	Material	No.	Part	Material
1	Pump body	AISI304	13	Cover box	PP-GF20
2	Interval channel	PP-GF30	14	Wiring base assembly	PC
3	Water outlet cover	PP-GF30	15	Capacitor	
4	Impeller	PP-GF30	16	Bearing	
5	Mechanical seal		17	Rotor	
6	O-ring	NBR			
7	Bracket cover	AISI304			
8	Bracket	ADC12			
9	Fan cover	PP			
10	Fan	PP-GF10			
11	End plate	ADC12			
12	Stator				



Package Information

Model	GW (Kgs)	L (mm)	W (mm)	H (mm)	Quantity (PCS/20'TEU)
AJm30S	5.7	350	180	220	1920
AJm45S	6.7	350	180	220	1920
AJm60S	9.2	420	228	257	1056
AJm75S	10.1	420	228	257	1056
AJm90S	10.7	420	228	257	1056



Identification Codes

24 V T T S - G1 S



Tank



Model	Max. Pressure (bar)	Nominal Capacity (L)	Actual Capacity (L)	Membrane	Max. Temp (°C)	Connection
24ST	8	24	20	Epdm	60	G1"
24STT	8	24	24	Epdm	60	G1"



Model	Max. Pressure (bar)	Nominal Capacity (L)	Actual Capacity (L)	Membrane	Max. Temp (°C)	Connection
2VT	8	2	2	Epdm	60	G1/2"
4VT	8	4	4	Epdm	60	G1"
5VT	8	5	5	Epdm	60	G1"
8VT	8	8	8	Epdm	60	G1"
19VT	8	19	18	Epdm	60	G1"
24VT	8	24	20	Epdm	60	G1"
24VTT	8	24	24	Epdm	60	G1"



Model	Max. Pressure (bar)	Nominal Capacity (L)	Actual Capacity (L)	Membrane	Max. Temp (°C)	Connection
19CT	8	19	18	Epdm	60	G1"
24CT	8	24	20	Epdm	60	G1"
24CTT	8	24	24	Epdm	60	G1"

*For capacity < 50L, pressure gauge is optional.
For capacity ≥ 50L, pressure gauge is standard.

Tank



Model	Max. Pressure (bar)	Nominal Capacity (L)	Actual Capacity (L)	Membrane	Max. Temp (°C)	Connection
50CT	8	50	36	Epdm	60	G1"
50CTT	8	50	50	Epdm	60	G1"
60CTT	8	60	60	Epdm	60	G1"
100CT	8	100	80	Epdm	60	G1"
100CTT	8	100	100	Epdm	60	G1"



Model	Max. Pressure (bar)	Nominal Capacity (L)	Actual Capacity (L)	Membrane	Max. Temp (°C)	Connection
50FT	8	50	36	Epdm	60	G1"
50FTT	8	50	50	Epdm	60	G1"
60FTT	8	60	60	Epdm	60	G1"
100FT	8	100	80	Epdm	60	G1"
100FTT	8	100	100	Epdm	60	G1"
200FTT	8	200	200	Butyl	60	G1½"
300FTT	8	300	300	Butyl	60	G1½"
500FTT	8	500	500	Butyl	60	G1½"

*For capacity < 50L, pressure gauge is optional.
For capacity ≥ 50L, pressure gauge is standard.

3-Way / 5-Way



5TA

5TB

3TA

Model	Connection	Length
3TA	G1"	70 , 80
5TA	G1"	80 , 90
5TB	G1"	80 , 90

Foot Valve



FVA

Model	Connection
FVA1	1"
FVA1.25	1¼"
FVA1.5	1½"
FVA2	2"
FVA3	3"

- Stainless Steel mesh
- Can be used as a check valve

Flexible Hose



Model	FH12.8-01(L=128mm)	FH44-03(L=440mm)
Inlet	G3/4"	G1"
Outlet	G3/8"	G1"
Material	Stainless steel wire	
Operating Limits	Fluid temperature up to 35°C Max. ambient temperature 40°C	

Filter



Model	WF-01B	WF-02B
Inlet/Outlet	1" x 1"	1" x 1"
Capacity	1L	2L
Max. Pressure	5 bar	5 bar
Operating Limits	Fluid temperature up to 35°C Max. ambient temperature 40°C	

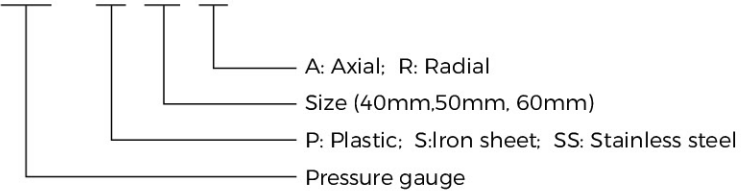
Pressure Gauge



Axial

Radial

PG - P 40 A



- Two connection types: (1)G1/4" (2)M10x1
- For 40mm gauge, the scale: 0 - 6 bar
- For 50mm gauge, the scale: 0 - 10 bar or 0 - 6 bar
- Back/bottom connection

Automatic Pump Controller



PS-04A

Rated Voltage	110-120VAC	220-240VAC	110-240VAC
Rated Frequency	50-60Hz		
Max. Current	10(6)A		
Max. Power(P1)	0.55kW(110-120VAC)	1.1kW(220-240VAC)	
Starting Pressure	1.0bar, 1.5bar, 2.2bar		
Max. Working Pressure	10bar		
Screw Size	R1", NPT1"; G1", G1-1/4"; G1-1/2"		
Protection Class	IP65		
Max. Working Temperature	60 °C		



PS-04B

Rated Voltage	110-120VAC	220-240VAC	110-240VAC
Rated Frequency	50-60Hz		
Max. Current	10(6)A		
Max. Power(P1)	0.55kW(110-120VAC)	1.1kW(220-240VAC)	
Starting Pressure	1.2bar, 1.5bar, 2.2bar		
Max. Working Pressure	10bar		
Screw Size	R1"		
Protection Class	IP65		
Max. Working Temperature	60 °C		



PS-04C

Rated Voltage	110-120VAC	220-240VAC	110-240VAC
Rated Frequency	50-60Hz		
Max. Current	10(6)A		
Max. Power(P1)	0.55kW(110-120VAC)	1.1kW(220-240VAC)	
Starting Pressure	1.2bar, 1.5bar, 2.2bar		
Max. Working Pressure	10bar		
Screw Size	G1"		
Protection Class	IP54		
Max. Working Temperature	60 °C		

* 1 bar=14.50PSI

Automatic Pump Controller



PS-04D

Rated Voltage	110-240VAC	220-240VAC	380VAC
Rated Frequency	50-60Hz		
Max. Current	30(16)A		
Max. Power(P1)	1.1kW	2.2kW	4.0kW
Starting Pressure	1.2bar, 1.5bar, 2.2bar		
Max. Working Pressure	10bar		
Screw Size	G1", G1-1/4", G1-1/2", NPT1"		G1-1/2"
Protection Class	IP65		
Max. Working Temperature	60 °C		

Automatic Pump Controller



PS-04T

Rated Voltage	110-120VAC	220-240VAC	110-240VAC
Rated Frequency	50-60Hz		
Max. Current	10(6)A		
Max. Power(P1)	0.55kW(110-120VAC)	1.1kW(220-240VAC)	
Starting Pressure	1.2 - 2.5bar		
Max. Working Pressure	10bar		
Screw Size	G1"		
Protection Class	IP65		
Max. Working Temperature	60 °C		



PS-04E

Rated Voltage	110-120VAC	220-240VAC	110-240VAC
Rated Frequency	50-60Hz		
Max. Current	30(16)A		
Max. Power(P1)	1.1 kW(110-120VAC)	2.2kW(220-240VAC)	
Starting Pressure	0.8bar - 6.7bar		
Max. Working Pressure	8bar		
Screw Size	G1"		
Protection Class	IP65		
Max. Working Temperature	60 °C		



PS-04F

Rated Voltage	220-240V		
Rated Frequency	50-60Hz		
Max. Current	16(10)A		
Max. Power(P1)	1.8kW(220-240VAC)		
Starting Pressure	0.5-3bar		
Max. Working Pressure	10bar		
Screw Size	G1"		
Protection Class	IP65		
Max. Working Temperature	60 °C		



PS-04E-1

Rated Voltage	110-120VAC	220-240VAC	110-240VAC
Rated Frequency	50-60Hz		
Max. Current	30(16)A		
Max. Power(P1)	1.1 kW(110-120VAC)	2.2kW(220-240VAC)	
Starting Pressure	1.5bar, 2.2bar		
Max. Working Pressure	8bar		
Screw Size	G1"		
Protection Class	IP65		
Max. Working Temperature	60 °C		

* 1bar=14.50PSI

Pressure Switch



PS-02A

Rated Voltage	110-120VAC	220-240VAC
Frequency	50/60 Hz	
Max. Current	20A	12A
Max. Power(P1)	1.6kW	1.9kW
Min. Cut-in	1bar	
Max. Cut-out	7bar	
Starting/Stopping Pressure	bar: 1.0/2.1; 1.4/2.8; 2.1/3.5; 2.8/4.2; 3.5/4.9; 4.9/7.0	
Screw Size	Female: NPT1/4, ZG1/4 Male: NPT1/4, ZG1/4 Female revolving connector: G1/4, G3/8	
Protection Class	IP20	
Max. Working Temperature	60°C	

* Max. working pressure=Max. cut out*1.5

Pressure Switch



PS-02B

Rated Voltage	110-120VAC	220-240VAC
Frequency	50/60 Hz	
Max. Current	20A	16A
Max. Power(P1)	1.6kW	2.6kW
Min. Cut-in	1bar	
Max. Cut-out	12bar	
Starting/Stopping Pressure	bar: 1.4/2.8; 2.1/3.5; 6.3/8.7; 9.6/12	
Screw Size	Female: NPT1/4, G1/4 Male: ZG1/4, M14 Female revolving connector: G1/4	
Protection Class	IP20	
Max. Working Temperature	60°C	



PS-02C

Rated Voltage	110-120VAC	220-240VAC	400VAC
Frequency	50/60 Hz		
Max. Current	16(8)A		
Max. Power(P1)	0.6kW	1.3kW	4.0kW
Min. Cut-in	1bar		
Max. Cut-out	5.5bar		
Starting/Stopping Pressure	bar: 1.2/2.4; 1.4/2.8; 1.5/3.0; 2.0/3.5; 3.5/4.9		
Screw Size	Female: NPT1/4, G1/4, Male: NPT1/4, G1/4, ZG1/4, Female revolving connector: G1/4, G3/8		
Protection Class	IP44		
Max. Working Temperature	60°C		



PS-02D

Rated Voltage	110-120VAC	220-240VAC
Frequency	50/60 Hz	
Max. Current	12A	
Max. Power(P1)	1.0kW	1.9kW
Min. Cut-in	1.4bar	
Max. Cut-out	6.9bar	
Starting/Stopping Pressure	bar: 1.4/2.8; 2.1/3.4; 2.8/4.1; 3.4/4.8	
Screw Size	Female: G1/4, Male: ZG1/4, G1/4, NPT1/4 Female revolving connector: G1/4, G3/8	
Protection Class	IP20	
Max. Working Temperature	60°C	

* Max. working pressure=Max. cut out*1.5

Capacitor



2 wires



2(4) terminals

Capacity(μF)	Type	Diameter(mm)	Length (mm)
6	2 wires	32	66
8	2 wires	32	66
8	4 terminals	35	72
10	2 wires	34	62
10	4 terminals	35	72
12	2 wires	40	73
16	2 wires	42	71
16	4 terminals	42	73
20	2 wires	42	74
20	4 terminals	42	74
25	2 wires	42	82
35	4 terminals	42	70
40	2 wires	42	82
40	4 terminals	45	73
42.5	2 terminals	51	100
45	2 terminals	51	100
50	2 terminals	51	100

Float Switch



FLO-01B



FLO-01B(With balance block)

Model	FLO-01B	FLO-01B(With balance block)
Specification	16(8)A 125/250V	
Cable	H07RN-F/8-F 3G1.0mm2x0.55m/0.65m/0.75m/2m/3m/5m/10m	
Lifetime	50000 cycles	
IP Protection	IP X8	
Operating Limits	Fluid temperature up to 35°C Max. ambient temperature 40°C	