

### Application

- Can be used to transfer clean water or other liquids similar to water in physical and chemical properties
- Suitable for small living water supply, automatic water sprinkler system, small air conditioner system or supporting equipment etc.

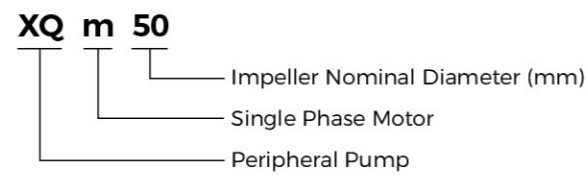
### Pump

- Special anti-rust treatment for cast iron pump body and support
- Brass impeller
- AISI 304 shaft
- Max. liquid temperature: +60°C
- Max. suction: +8 m

### Motor

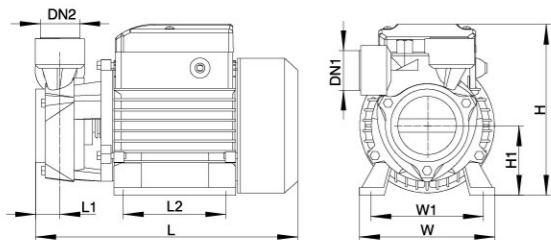
- Low noise & Long life bearing
- Motor with copper winding
- Built-in thermal protector for single phase motor
- Insulation class: F
- Enclosures class: IPX4
- Max. ambient temperature: +50°C

### Identification Codes



### Technical Data

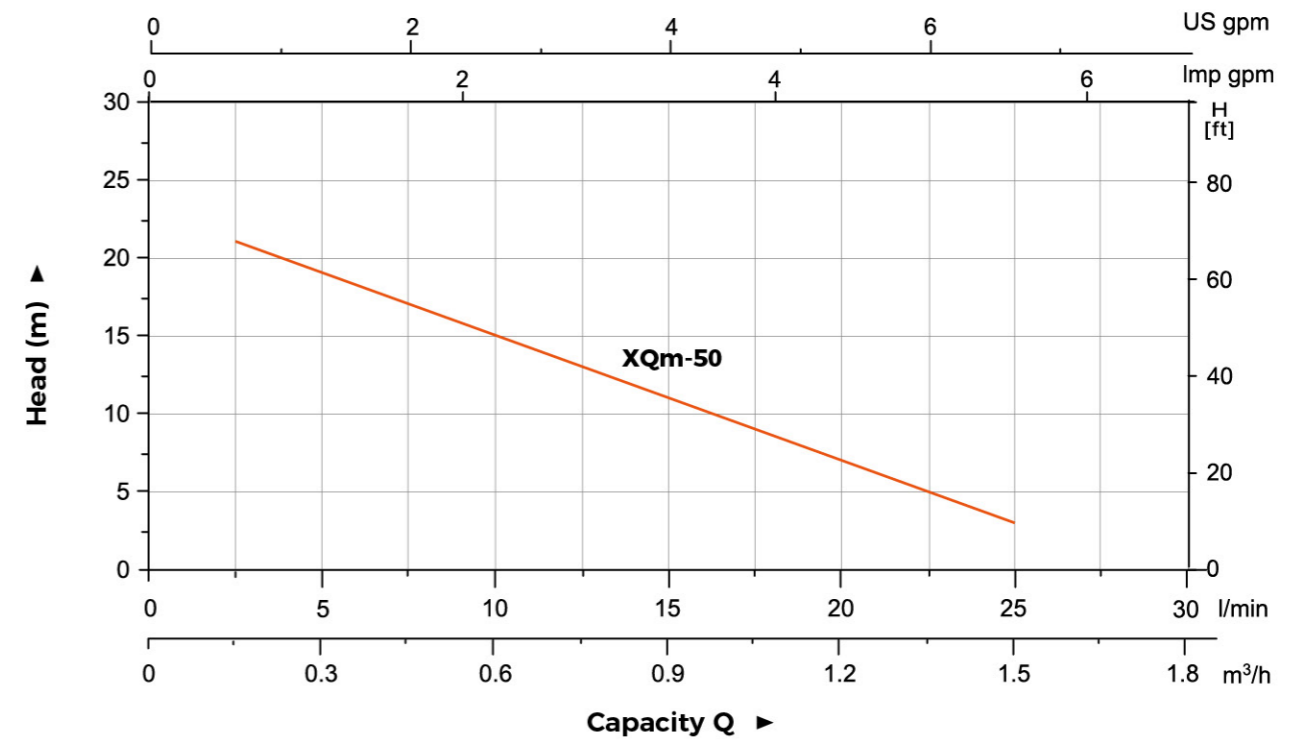
| Model | Power |      | Q(m <sup>3</sup> /h) | 0  | 0.3 | 0.6 | 0.9 | 1.2 | 1.5 |
|-------|-------|------|----------------------|----|-----|-----|-----|-----|-----|
|       | kW    | HP   |                      |    |     |     |     |     |     |
| XQm50 | 0.125 | 0.15 | H(m)                 | 20 | 19  | 15  | 11  | 7   | 3   |



### Dimension

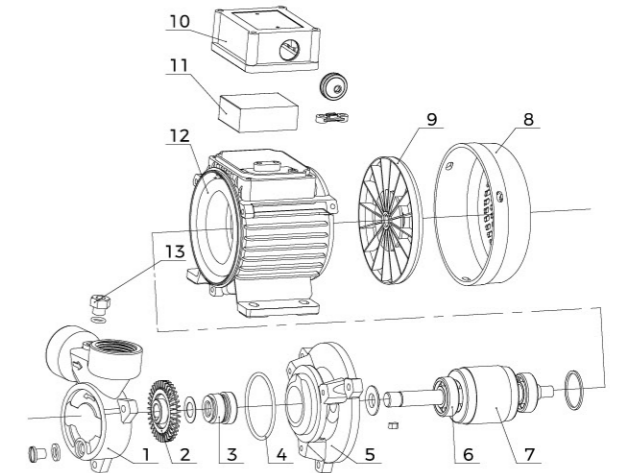
| Model | DN1 | DN2 | L (mm) | W (mm) | H (mm) | L1 (mm) | L2 (mm) | W1 (mm) | H1 (mm) |
|-------|-----|-----|--------|--------|--------|---------|---------|---------|---------|
| XQm50 | 1"  | 1"  | 172.5  | 120    | 146    | 15.5    | 45      | 100     | 60      |

### Hydraulic Performance Curves



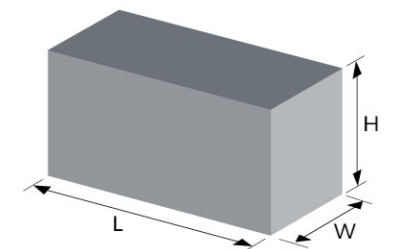
### Material Table

| No. | Part                     | Material |
|-----|--------------------------|----------|
| 1   | Pump body                | HT200    |
| 2   | Impeller                 | HPb59-1  |
| 3   | Mechanical seal          |          |
| 4   | O-ring                   | NBR      |
| 5   | Pump support             | HT200    |
| 6   | Deep groove ball bearing |          |
| 7   | Rotor                    |          |
| 8   | Fan cover                | PP       |
| 9   | Fan                      | PP-GF10  |
| 10  | Cover box                | ABS      |
| 11  | Capacitor                |          |
| 12  | Stator                   |          |
| 13  | Filling plug             | HPb59-1  |

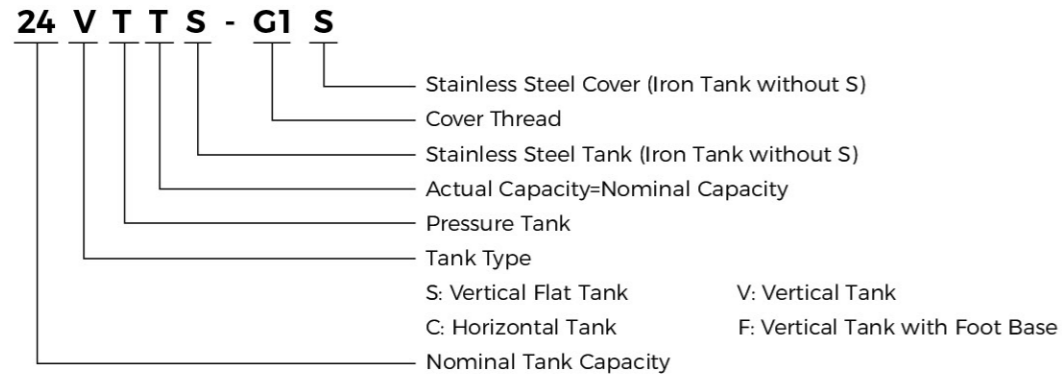


### Package Information

| Model | GW (Kgs) | L (mm) | W (mm) | H (mm) | Quantity (PCS/20'TEU) |
|-------|----------|--------|--------|--------|-----------------------|
| XQm50 | 3.85     | 188    | 140    | 162    | 5148                  |



Identification Codes



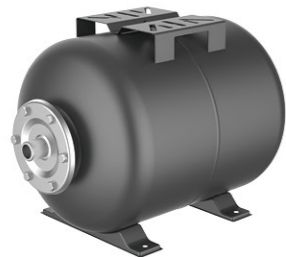
Tank



| Model | Max. Pressure (bar) | Nominal Capacity (L) | Actual Capacity (L) | Membrane | Max. Temp (°C) | Connection |
|-------|---------------------|----------------------|---------------------|----------|----------------|------------|
| 24ST  | 8                   | 24                   | 20                  | Epdm     | 60             | G1"        |
| 24STT | 8                   | 24                   | 24                  | Epdm     | 60             | G1"        |



| Model | Max. Pressure (bar) | Nominal Capacity (L) | Actual Capacity (L) | Membrane | Max. Temp (°C) | Connection |
|-------|---------------------|----------------------|---------------------|----------|----------------|------------|
| 2VT   | 8                   | 2                    | 2                   | Epdm     | 60             | G1/2"      |
| 4VT   | 8                   | 4                    | 4                   | Epdm     | 60             | G1"        |
| 5VT   | 8                   | 5                    | 5                   | Epdm     | 60             | G1"        |
| 8VT   | 8                   | 8                    | 8                   | Epdm     | 60             | G1"        |
| 19VT  | 8                   | 19                   | 18                  | Epdm     | 60             | G1"        |
| 24VT  | 8                   | 24                   | 20                  | Epdm     | 60             | G1"        |
| 24VTT | 8                   | 24                   | 24                  | Epdm     | 60             | G1"        |



| Model | Max. Pressure (bar) | Nominal Capacity (L) | Actual Capacity (L) | Membrane | Max. Temp (°C) | Connection |
|-------|---------------------|----------------------|---------------------|----------|----------------|------------|
| 19CT  | 8                   | 19                   | 18                  | Epdm     | 60             | G1"        |
| 24CT  | 8                   | 24                   | 20                  | Epdm     | 60             | G1"        |
| 24CTT | 8                   | 24                   | 24                  | Epdm     | 60             | G1"        |

\*For capacity < 50L, pressure gauge is optional.  
For capacity ≥ 50L, pressure gauge is standard.

Tank



| Model  | Max. Pressure (bar) | Nominal Capacity (L) | Actual Capacity (L) | Membrane | Max. Temp (°C) | Connection |
|--------|---------------------|----------------------|---------------------|----------|----------------|------------|
| 50CT   | 8                   | 50                   | 36                  | Epdm     | 60             | G1"        |
| 50CTT  | 8                   | 50                   | 50                  | Epdm     | 60             | G1"        |
| 60CTT  | 8                   | 60                   | 60                  | Epdm     | 60             | G1"        |
| 100CT  | 8                   | 100                  | 80                  | Epdm     | 60             | G1"        |
| 100CTT | 8                   | 100                  | 100                 | Epdm     | 60             | G1"        |



| Model  | Max. Pressure (bar) | Nominal Capacity (L) | Actual Capacity (L) | Membrane | Max. Temp (°C) | Connection |
|--------|---------------------|----------------------|---------------------|----------|----------------|------------|
| 50FT   | 8                   | 50                   | 36                  | Epdm     | 60             | G1"        |
| 50FTT  | 8                   | 50                   | 50                  | Epdm     | 60             | G1"        |
| 60FTT  | 8                   | 60                   | 60                  | Epdm     | 60             | G1"        |
| 100FT  | 8                   | 100                  | 80                  | Epdm     | 60             | G1"        |
| 100FTT | 8                   | 100                  | 100                 | Epdm     | 60             | G1"        |
| 200FTT | 8                   | 200                  | 200                 | Butyl    | 60             | G1½"       |
| 300FTT | 8                   | 300                  | 300                 | Butyl    | 60             | G1½"       |
| 500FTT | 8                   | 500                  | 500                 | Butyl    | 60             | G1½"       |

\*For capacity < 50L, pressure gauge is optional.  
For capacity ≥ 50L, pressure gauge is standard.

3-Way / 5-Way



| Model | Connection | Length  |
|-------|------------|---------|
| 3TA   | G1"        | 70 , 80 |
| 5TA   | G1"        | 80 , 90 |
| 5TB   | G1"        | 80 , 90 |

Foot Valve



| Model   | Connection |
|---------|------------|
| FVA1    | 1"         |
| FVA1.25 | 1¼"        |
| FVA1.5  | 1½"        |
| FVA2    | 2"         |
| FVA3    | 3"         |

● Stainless Steel mesh  
● Can be used as a check valve



## Accessories

### Flexible Hose



| Model            | FH12.8-01(L=128mm)  | FH44-03(L=440mm) |
|------------------|---|------------------|
| Inlet            | G3/4"   | G1"              |
| Outlet           | G3/8"   | G1"              |
| Material         | Stainless steel wire  |                  |
| Operating Limits | Fluid temperature up to 35°C<br>Max. ambient temperature 40°C |                  |

### Filter



| Model            | WF-01B  | WF-02B  |
|------------------|---|---------|
| Inlet/Outlet     | 1" x 1"   | 1" x 1" |
| Capacity         | 1L  | 2L      |
| Max. Pressure    | 5 bar   | 5 bar   |
| Operating Limits | Fluid temperature up to 35°C<br>Max. ambient temperature 40°C |         |

### Pressure Gauge



Axial

Radial

PG - P 40 A

A: Axial; R: Radial  
Size (40mm, 50mm, 60mm)  
P: Plastic; S: Iron sheet; SS: Stainless steel  
Pressure gauge

- Two connection types: (1) G1/4" (2) M10x1
- For 40mm gauge, the scale: 0 - 6 bar
- For 50mm gauge, the scale: 0 - 10 bar or 0 - 6 bar
- Back/bottom connection

### Automatic Pump Controller



PS-04A

|                          |                                   |                   |            |
|--------------------------|-----------------------------------|-------------------|------------|
| Rated Voltage            | 110-120VAC                        | 220-240VAC        | 110-240VAC |
| Rated Frequency          | 50-60Hz                           |                   |            |
| Max. Current             | 10(6)A                            |                   |            |
| Max. Power(P1)           | 0.55kW(110-120VAC)                | 1.1kW(220-240VAC) |            |
| Starting Pressure        | 1.0bar, 1.5bar, 2.2bar            |                   |            |
| Max. Working Pressure    | 10bar                             |                   |            |
| Screw Size               | R1", NPT1"; G1", G1-1/4"; G1-1/2" |                   |            |
| Protection Class         | IP65                              |                   |            |
| Max. Working Temperature | 60 °C                             |                   |            |



PS-04B

|                          |                        |                   |            |
|--------------------------|------------------------|-------------------|------------|
| Rated Voltage            | 110-120VAC             | 220-240VAC        | 110-240VAC |
| Rated Frequency          | 50-60Hz                |                   |            |
| Max. Current             | 10(6)A                 |                   |            |
| Max. Power(P1)           | 0.55kW(110-120VAC)     | 1.1kW(220-240VAC) |            |
| Starting Pressure        | 1.2bar, 1.5bar, 2.2bar |                   |            |
| Max. Working Pressure    | 10bar                  |                   |            |
| Screw Size               | R1"                    |                   |            |
| Protection Class         | IP65                   |                   |            |
| Max. Working Temperature | 60 °C                  |                   |            |



PS-04C

|                          |                        |                   |            |
|--------------------------|------------------------|-------------------|------------|
| Rated Voltage            | 110-120VAC             | 220-240VAC        | 110-240VAC |
| Rated Frequency          | 50-60Hz                |                   |            |
| Max. Current             | 10(6)A                 |                   |            |
| Max. Power(P1)           | 0.55kW(110-120VAC)     | 1.1kW(220-240VAC) |            |
| Starting Pressure        | 1.2bar, 1.5bar, 2.2bar |                   |            |
| Max. Working Pressure    | 10bar                  |                   |            |
| Screw Size               | G1"                    |                   |            |
| Protection Class         | IP54                   |                   |            |
| Max. Working Temperature | 60 °C                  |                   |            |

\* 1bar=14.50PSI

Automatic Pump Controller



PS-04D

|                                 |                              |            |         |
|---------------------------------|------------------------------|------------|---------|
| <b>Rated Voltage</b>            | 110-240VAC                   | 220-240VAC | 380VAC  |
| <b>Rated Frequency</b>          | 50-60Hz                      |            |         |
| <b>Max. Current</b>             | 30(16)A                      |            |         |
| <b>Max. Power(P1)</b>           | 1.1kW                        | 2.2kW      | 4.0kW   |
| <b>Starting Pressure</b>        | 1.2bar, 1.5bar, 2.2bar       |            |         |
| <b>Max. Working Pressure</b>    | 10bar                        |            |         |
| <b>Screw Size</b>               | G1", G1-1/4", G1-1/2", NPT1" |            | G1-1/2" |
| <b>Protection Class</b>         | IP65                         |            |         |
| <b>Max. Working Temperature</b> | 60 °C                        |            |         |



PS-04E

|                                 |                   |                   |            |
|---------------------------------|-------------------|-------------------|------------|
| <b>Rated Voltage</b>            | 110-120VAC        | 220-240VAC        | 110-240VAC |
| <b>Rated Frequency</b>          | 50-60Hz           |                   |            |
| <b>Max. Current</b>             | 30(16)A           |                   |            |
| <b>Max. Power(P1)</b>           | 1.1kW(110-120VAC) | 2.2kW(220-240VAC) |            |
| <b>Starting Pressure</b>        | 0.8bar - 6.7bar   |                   |            |
| <b>Max. Working Pressure</b>    | 8bar              |                   |            |
| <b>Screw Size</b>               | G1"               |                   |            |
| <b>Protection Class</b>         | IP65              |                   |            |
| <b>Max. Working Temperature</b> | 60 °C             |                   |            |



PS-04E-1

|                                 |                   |                   |            |
|---------------------------------|-------------------|-------------------|------------|
| <b>Rated Voltage</b>            | 110-120VAC        | 220-240VAC        | 110-240VAC |
| <b>Rated Frequency</b>          | 50-60Hz           |                   |            |
| <b>Max. Current</b>             | 30(16)A           |                   |            |
| <b>Max. Power(P1)</b>           | 1.1kW(110-120VAC) | 2.2kW(220-240VAC) |            |
| <b>Starting Pressure</b>        | 1.5bar, 2.2bar    |                   |            |
| <b>Max. Working Pressure</b>    | 8bar              |                   |            |
| <b>Screw Size</b>               | G1"               |                   |            |
| <b>Protection Class</b>         | IP65              |                   |            |
| <b>Max. Working Temperature</b> | 60 °C             |                   |            |

\* 1bar=14.50PSI

Automatic Pump Controller



PS-04T

|                                 |                    |                   |            |
|---------------------------------|--------------------|-------------------|------------|
| <b>Rated Voltage</b>            | 110-120VAC         | 220-240VAC        | 110-240VAC |
| <b>Rated Frequency</b>          | 50-60Hz            |                   |            |
| <b>Max. Current</b>             | 10(6)A             |                   |            |
| <b>Max. Power(P1)</b>           | 0.55kW(110-120VAC) | 1.1kW(220-240VAC) |            |
| <b>Starting Pressure</b>        | 1.2 - 2.5bar       |                   |            |
| <b>Max. Working Pressure</b>    | 10bar              |                   |            |
| <b>Screw Size</b>               | G1"                |                   |            |
| <b>Protection Class</b>         | IP65               |                   |            |
| <b>Max. Working Temperature</b> | 60 °C              |                   |            |



PS-04F

|                                 |                   |  |  |
|---------------------------------|-------------------|--|--|
| <b>Rated Voltage</b>            | 220-240V          |  |  |
| <b>Rated Frequency</b>          | 50-60Hz           |  |  |
| <b>Max. Current</b>             | 16(10)A           |  |  |
| <b>Max. Power(P1)</b>           | 1.8kW(220-240VAC) |  |  |
| <b>Starting Pressure</b>        | 0.5-3bar          |  |  |
| <b>Max. Working Pressure</b>    | 10bar             |  |  |
| <b>Screw Size</b>               | G1"               |  |  |
| <b>Protection Class</b>         | IP65              |  |  |
| <b>Max. Working Temperature</b> | 60 °C             |  |  |

Pressure Switch



PS-02A

|                                   |  |            |
|-----------------------------------|--|------------|
| <b>Rated Voltage</b>              | 110-120VAC   | 220-240VAC |
| <b>Frequency</b>                  | 50/60 Hz   |            |
| <b>Max. Current</b>               | 20A  | 12A        |
| <b>Max. Power(P1)</b>             | 1.6kW  | 1.9kW      |
| <b>Min. Cut-in</b>                | 1bar   |            |
| <b>Max. Cut-out</b>               | 7bar   |            |
| <b>Starting/Stopping Pressure</b> | bar: 1.0/2.1; 1.4/2.8; 2.1/3.5;<br>2.8/4.2; 3.5/4.9; 4.9/7.0                           |            |
| <b>Screw Size</b>                 | Female: NPT1/4, ZG1/4<br>Male: NPT1/4, ZG1/4<br>Female revolving connector: G1/4, G3/8 |            |
| <b>Protection Class</b>           | IP20   |            |
| <b>Max. Working Temperature</b>   | 60°C   |            |

\* Max. working pressure=Max. cut out\*1.5



Pressure Switch



PS-02B

|                                   |  |            |
|-----------------------------------|--|------------|
| <b>Rated Voltage</b>              | 110-120VAC   | 220-240VAC |
| <b>Frequency</b>                  | 50/60 Hz   |            |
| <b>Max. Current</b>               | 20A  | 16A        |
| <b>Max. Power(P1)</b>             | 1.6kW  | 2.6kW      |
| <b>Min. Cut-in</b>                | 1bar   |            |
| <b>Max. Cut-out</b>               | 12bar  |            |
| <b>Starting/Stopping Pressure</b> | bar: 1.4/2.8; 2.1/3.5; 6.3/8.7; 9.6/12                                       |            |
| <b>Screw Size</b>                 | Female: NPT1/4, G1/4<br>Male: ZG1/4, M14<br>Female revolving connector: G1/4 |            |
| <b>Protection Class</b>           | IP20   |            |
| <b>Max. Working Temperature</b>   | 60°C   |            |



PS-02C

|                                   |   |            |        |
|-----------------------------------|---|------------|--------|
| <b>Rated Voltage</b>              | 110-120VAC  | 220-240VAC | 400VAC |
| <b>Frequency</b>                  | 50/60 Hz  |            |        |
| <b>Max. Current</b>               | 16(8)A  |            |        |
| <b>Max. Power(P1)</b>             | 0.6kW   | 1.3kW      | 4.0kW  |
| <b>Min. Cut-in</b>                | 1bar  |            |        |
| <b>Max. Cut-out</b>               | 5.5bar  |            |        |
| <b>Starting/Stopping Pressure</b> | bar: 1.2/2.4; 1.4/2.8; 1.5/3.0; 2.0/3.5; 3.5/4.9  |            |        |
| <b>Screw Size</b>                 | Female: NPT1/4, G1/4,<br>Male: NPT1/4, G1/4, ZG1/4,<br>Female revolving connector: G1/4, G3/8 |            |        |
| <b>Protection Class</b>           | IP44  |            |        |
| <b>Max. Working Temperature</b>   | 60°C  |            |        |



PS-02D

|                                   |  |            |
|-----------------------------------|--|------------|
| <b>Rated Voltage</b>              | 110-120VAC   | 220-240VAC |
| <b>Frequency</b>                  | 50/60 Hz   |            |
| <b>Max. Current</b>               | 12A  |            |
| <b>Max. Power(P1)</b>             | 1.0kW  | 1.9kW      |
| <b>Min. Cut-in</b>                | 1.4bar   |            |
| <b>Max. Cut-out</b>               | 6.9bar   |            |
| <b>Starting/Stopping Pressure</b> | bar: 1.4/2.8; 2.1/3.4; 2.8/4.1; 3.4/4.8  |            |
| <b>Screw Size</b>                 | Female: G1/4,<br>Male: ZG1/4, G1/4, NPT1/4<br>Female revolving connector: G1/4, G3/8 |            |
| <b>Protection Class</b>           | IP20   |            |
| <b>Max. Working Temperature</b>   | 60°C   |            |

\* Max. working pressure=Max. cut out\*1.5

Capacitor



2 wires



2(4) terminals

| Capacity(μF) | Type        | Diameter(mm) | Length (mm) |
|--------------|-------------|--------------|-------------|
| 6            | 2 wires     | 32           | 66          |
| 8            | 2 wires     | 32           | 66          |
| 8            | 4 terminals | 35           | 72          |
| 10           | 2 wires     | 34           | 62          |
| 10           | 4 terminals | 35           | 72          |
| 12           | 2 wires     | 40           | 73          |
| 16           | 2 wires     | 42           | 71          |
| 16           | 4 terminals | 42           | 73          |
| 20           | 2 wires     | 42           | 74          |
| 20           | 4 terminals | 42           | 74          |
| 25           | 2 wires     | 42           | 82          |
| 35           | 4 terminals | 42           | 70          |
| 40           | 2 wires     | 42           | 82          |
| 40           | 4 terminals | 45           | 73          |
| 42.5         | 2 terminals | 51           | 100         |
| 45           | 2 terminals | 51           | 100         |
| 50           | 2 terminals | 51           | 100         |

Float Switch



FLO-01B



FLO-01B(With balance block)

| Model                   | FLO-01B   | FLO-01B(With balance block) |
|-------------------------|---|-----------------------------|
| <b>Specification</b>    | 16(8)A<br>125/250V  |                             |
| <b>Cable</b>            | H07RN-F/8-F<br>3G1.0mm2x0.55m/0.65m/0.75m/2m/3m/5m/10m        |                             |
| <b>Lifetime</b>         | 50000 cycles  |                             |
| <b>IP Protection</b>    | IP X8   |                             |
| <b>Operating Limits</b> | Fluid temperature up to 35°C<br>Max. ambient temperature 40°C |                             |

## PUMP RANGE

### Peripheral Pump



### Self-Priming Peripheral Pump



### Jet Pump



### Jet Pump for Deep Wells



### Centrifugal Pump



### Multistage Centrifugal Pump



### Horizontal Multistage Centrifugal Pump



### Permanent Magnet Intelligent Booster



### Self-Priming Centrifugal Pump



### Submersible Pump



### Domestic Lifting Station



### Pool Pump



### Garden Jet Pump



### Garden Pressure System



### Fountain Pump



### Garden Submersible Pump



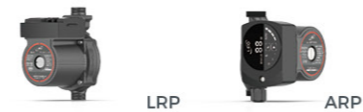
### Petrol Lawnmowers



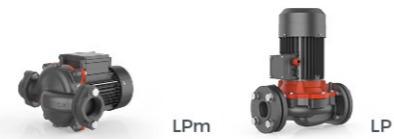
### Wall-Mounted Gas Boiler Pump



### Circulation Pump



### Booster Pump



### Stainless Steel Centrifugal Pump



### Semi-open Impeller Stainless Steel Centrifugal Pump



### Stainless Steel Horizontal Multistage Pump



### Intelligent Pressure Booster System



### Vertical Multistage Pump



### Pressure Booster System



### Stainless Steel Standard Centrifugal Pump



### Standard Centrifugal Pump



### End Suction Centrifugal Pump



### Vertical In-line Pump



## PUMP RANGE

### Submersible Sewage Pump



### Submersible Dewatering Pump



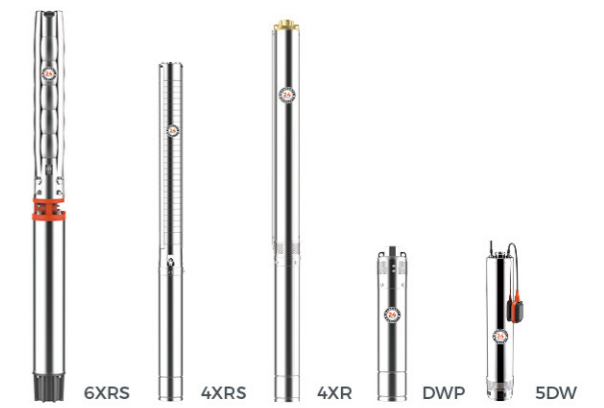
### Submersible Slurry Pump



### Gasoline/Diesel Water Pump



### Submersible Borehole Pump 2", 2.5", 3", 4", 5", 6"



### Solar Pumping System

