






TECHNICAL DATA		ONDINA 50 M			
Date: 2018-09-04		COD: 100050000			
		From Company Reference Address Phone Telefax E-mail			
		Reference Offer no.			
OPERATING DATA REQUIRED					
Flow	0 m ³ /h	Viscosity	1,005 mm ² /s		
Head	0 m	Kin. viscosity	1,0033 mPa s		
Fluid	Cold water	Vapor pressure	0,02337 bar		
Temperature	20 °C				
Density	998,3 kg/m ³				
CLOSE COUPLED PERIPHERAL PUMPS					
The close-coupled pumps with peripheral impeller series ONDINA have been designed to pump clean liquids, without abrasives and suspended solids, non-explosive or aggressive for the pump's materials.					
<ul style="list-style-type: none"> · Liquid temperature not higher than 35 °C for domestic use (CEI EN 60335-2-41) or 90 °C for other use, while the ambient temperature must not be higher than 40 °C · Flow rate up to ~ 3 m³/h · Heads up to ~ 55 m 					
 SEA LAND S.r.l. (PD) ITALY www.sea-land.it			 MADE IN ITALY		
Type		%		Ø	
H (rif.5)	m	Q (rif.5)		l/1'	
Hmin (rif.11) m		Hmax (rif.6) m	≥		
P2 (rif.2) HP	(rif.2) kW	(rif.1) A			
~ (rif.1)	v	Hz	η	%	
(rif.3) µF	v	IP (rif.9)	P1 (rif.4)	W	
S/N	Ins.Cl.(rif.8)		Rpm		
T. MAX FLUID.	°C	(rif.7)	kg	∇	m
Servizio continuo			Continuous duty		
GENERAL DESCRIPTION Voltage = V...(ref. 1), Power = HP or KW...(ref. 2), Input power = [W]...(ref. 4), Capacitor = µF...(ref. 3), Input current = A...(ref. 1), Rate of flow = l/1'...(ref. 5), Head = m...(ref. 5), Weight and dimensions = kg...(ref.7), Insulation Class = ...(ref. 8), Protected to = IP...(ref. 9)					
Sea-land reserves the right to make changes without prior notice					

DATA SHEET	ONDINA 50 M	
Date: 2018-09-04	COD: 100050000	



TECHNICAL FEATURES

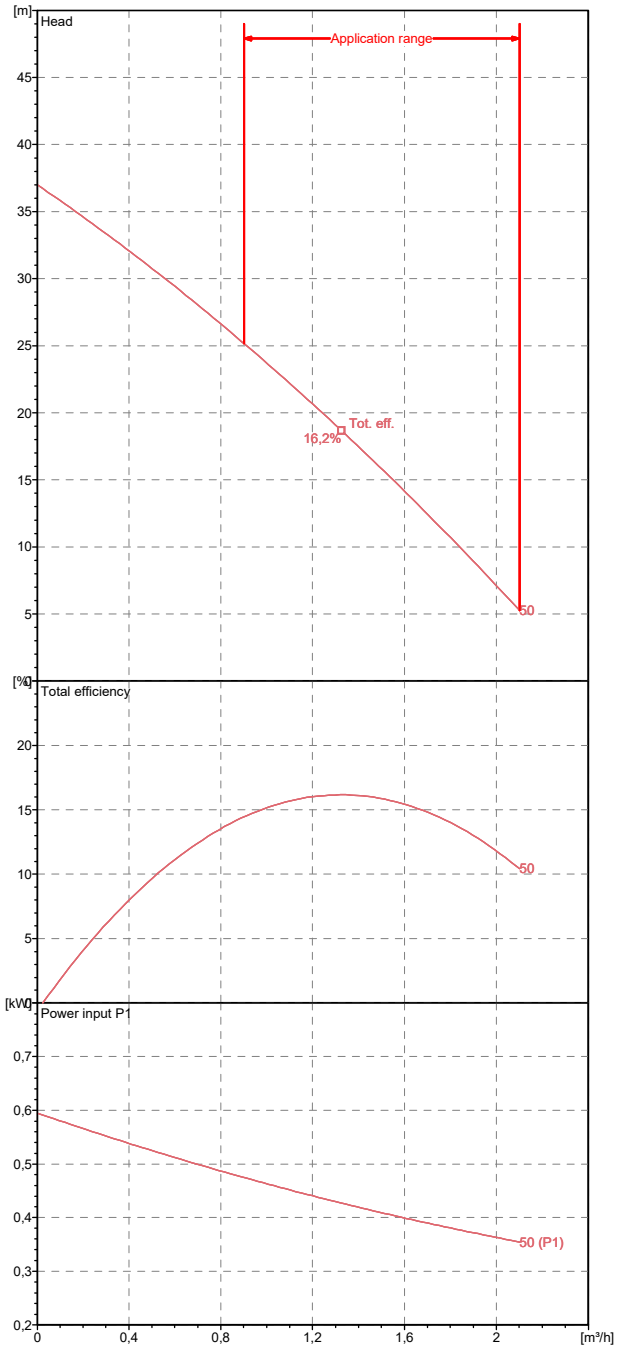
- Pump body: cast iron G20 with anti-corrosive coating
- Motor bracket: cast iron G20 with anti-corrosive coating
- Impeller: stamped brass UNI- EN 12165
- Pump shaft: stainless steel Aisi 420F
- Mechanical seal: carbon-ceramics
- "ABS" Anti-blocking system in Aisi 304 stainless steel (only ONDINA 50) international Patent N° IT1315401



MOTOR

- The control motors are asynchronous, squirrel cage-type, closed, with external ventilation
- Incorporated motor protection and capacitor always on, for single-phase models
 - The motor protection for three-phase models must be installed by the customer.
- Equipment compliant with current standards should be used
- Class of insulation: F(Class B per Basic 50) -service:S1-
 - Degree of protection IP 44
 - Terminal board protection: IP 54

Tolerance of curves to ISO 9906 - grade 3B

Guarantee point = Best Efficiency Point: QBEP= 1,33 m³/h HBEP= 18,7 m



		SEA LAND S.r.l.			
		(PD) ITALY		MADE IN ITALY	
www.sea-land.it					
Type	ONDINA 50 M	16,176	%	Ø	
H	5 - 25	m	Q	2 m³/h	- 1 m³/h
Hmin	5.3	m	Hmax	35	m
≥					
P2	0,5 HP	0,37	kW	2.5	A
1~	230	V	50	Hz	η %
10	μF	450	V	IP 44	P1 560 W
S/N			Ins.Cl.	F	2900 RPM
T. MAX FLUID.	35	°C	6.1	kg	∇ m
Servizio continuo			Continuous duty		

Sea-land reserves the right to make changes without prior notice

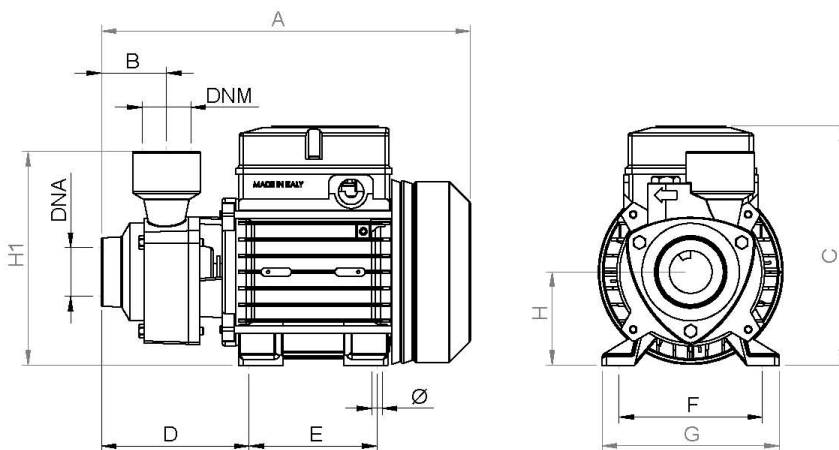
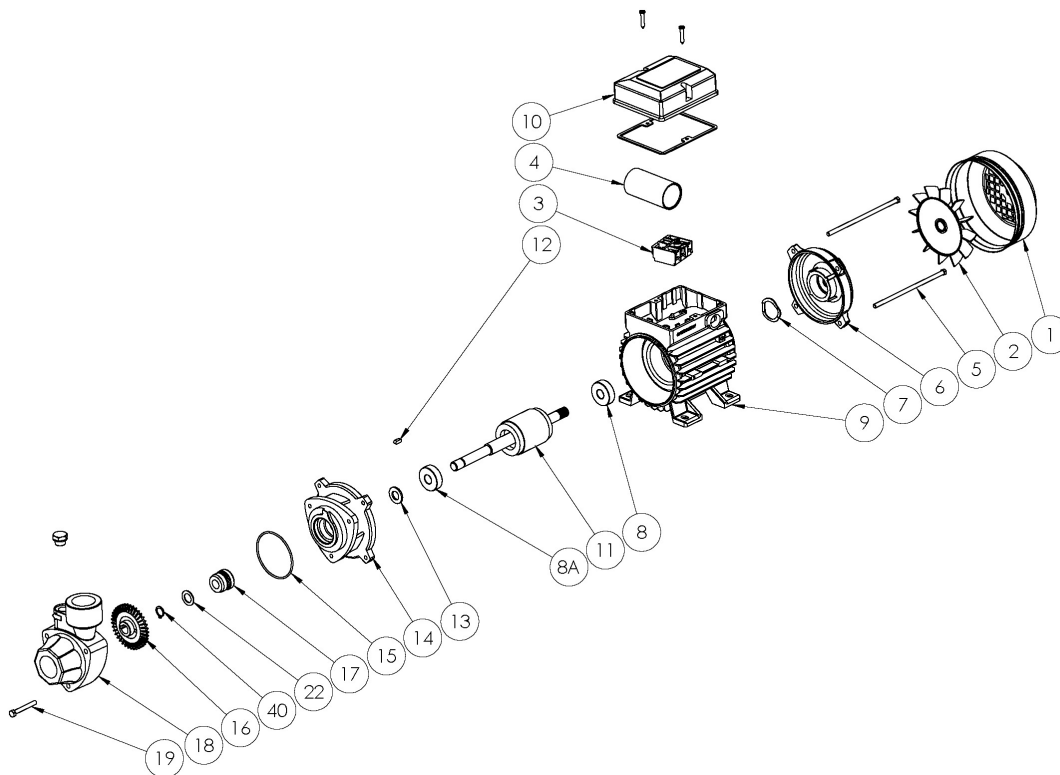
DIMENSIONAL DATA

ONDINA 50 M







Date: 2018-09-04

COD: 100050000



TIPO TYPE	DIMENSIONI [mm] DIMENSIONS [mm]										IMBALLO [mm] PACKING [mm]			PESO WEIGHT [kg]				
	A	B	C	D	E	F	G	Ø	H	H1	DNA	DNM	A		L	P		
ONDINA 50 M	256	50	156	115	80	100	120	7	63	145			1"	1"	180	280	250	6.1

Sea-land reserves the right to make changes without prior notice

TECHNICAL DATA		ONDINA 50 T																																															
Date: 2018-09-04		COD: 100052000																																															
	From																																																
	Company Reference Address Phone Telefax E-mail																																																
		Reference Offer no.																																															
OPERATING DATA REQUIRED																																																	
Flow	0 m ³ /h	Viscosity	1,005 mm ² /s																																														
Head	0 m	Kin. viscosity	1,0033 mPa s																																														
Fluid	Cold water	Vapor pressure	0,02337 bar																																														
Temperature	20 °C																																																
Density	998,3 kg/m ³																																																
CLOSE COUPLED PERIPHERAL PUMPS																																																	
<p>The close-coupled pumps with peripheral impeller series ONDINA have been designed to pump clean liquids, without abrasives and suspended solids, non-explosive or aggressive for the pump's materials.</p> <ul style="list-style-type: none"> · Liquid temperature not higher than 35 °C for domestic use (CEI EN 60335-2-41) or 90 °C for other use, while the ambient temperature must not be higher than 40 °C · Flow rate up to ~ 3 m³/h · Heads up to ~ 55 m 																																																	
 SEA LAND S.r.l. (PD) ITALY www.sea-land.it			 CE MADE IN ITALY																																														
GENERAL DESCRIPTION																																																	
Voltage = V...(ref. 1), Power = HP or KW...(ref. 2), Input power = [W]...(ref. 4), Capacitor = μF...(ref. 3), Input current = A...(ref. 1), Rate of flow = l/1'...(ref. 5), Head = m...(ref. 5), Weight and dimensions = kg...(ref.7), Insulation Class = ...(ref. 8), Protected to = IP...(ref. 9)																																																	
<table border="1"> <tr> <td>Type</td> <td colspan="2"></td> <td>%</td> <td>Ø</td> </tr> <tr> <td>H (rif.5)</td> <td>m</td> <td>Q (rif.5)</td> <td colspan="2">l/1'</td> </tr> <tr> <td>Hmin (rif.11) m</td> <td>Hmax (rif.6) m</td> <td colspan="3">≥</td> </tr> <tr> <td>P2 (rif.2) HP</td> <td>(rif.2) kW</td> <td>(rif.1)</td> <td colspan="2">A</td> </tr> <tr> <td>~ (rif.1)</td> <td>V</td> <td>Hz</td> <td>η</td> <td>%</td> </tr> <tr> <td>(rif.3) μF</td> <td>V</td> <td>IP (rif.9)</td> <td>P1 (rif.4)</td> <td>W</td> </tr> <tr> <td>S/N</td> <td colspan="2">Ins.Cl.(rif.8)</td> <td colspan="2">Rpm</td> </tr> <tr> <td>T. MAX FLUID.</td> <td>°C</td> <td>(rif.7)</td> <td>kg</td> <td>m</td> </tr> <tr> <td colspan="2">Servizio continuo</td> <td colspan="3">Continuous duty</td> </tr> </table>					Type			%	Ø	H (rif.5)	m	Q (rif.5)	l/1'		Hmin (rif.11) m	Hmax (rif.6) m	≥			P2 (rif.2) HP	(rif.2) kW	(rif.1)	A		~ (rif.1)	V	Hz	η	%	(rif.3) μF	V	IP (rif.9)	P1 (rif.4)	W	S/N	Ins.Cl.(rif.8)		Rpm		T. MAX FLUID.	°C	(rif.7)	kg	m	Servizio continuo		Continuous duty		
Type			%	Ø																																													
H (rif.5)	m	Q (rif.5)	l/1'																																														
Hmin (rif.11) m	Hmax (rif.6) m	≥																																															
P2 (rif.2) HP	(rif.2) kW	(rif.1)	A																																														
~ (rif.1)	V	Hz	η	%																																													
(rif.3) μF	V	IP (rif.9)	P1 (rif.4)	W																																													
S/N	Ins.Cl.(rif.8)		Rpm																																														
T. MAX FLUID.	°C	(rif.7)	kg	m																																													
Servizio continuo		Continuous duty																																															
Sea-land reserves the right to make changes without prior notice																																																	
Page 1 / 3																																																	

DATA SHEET

ONDINA 50 T



Date: 2018-09-04

COD: 100052000



TECHNICAL FEATURES

- Pump body: cast iron G20 with anti-corrosive coating
- Motor bracket: cast iron G20 with anti-corrosive coating
- Impeller: stamped brass UNI- EN 12165
- Pump shaft: stainless steel Aisi 420F
- Mechanical seal: carbon-ceramics
- "ABS" Anti-blocking system in Aisi 304 stainless steel (only ONDINA 50) international Patent N° IT1315401

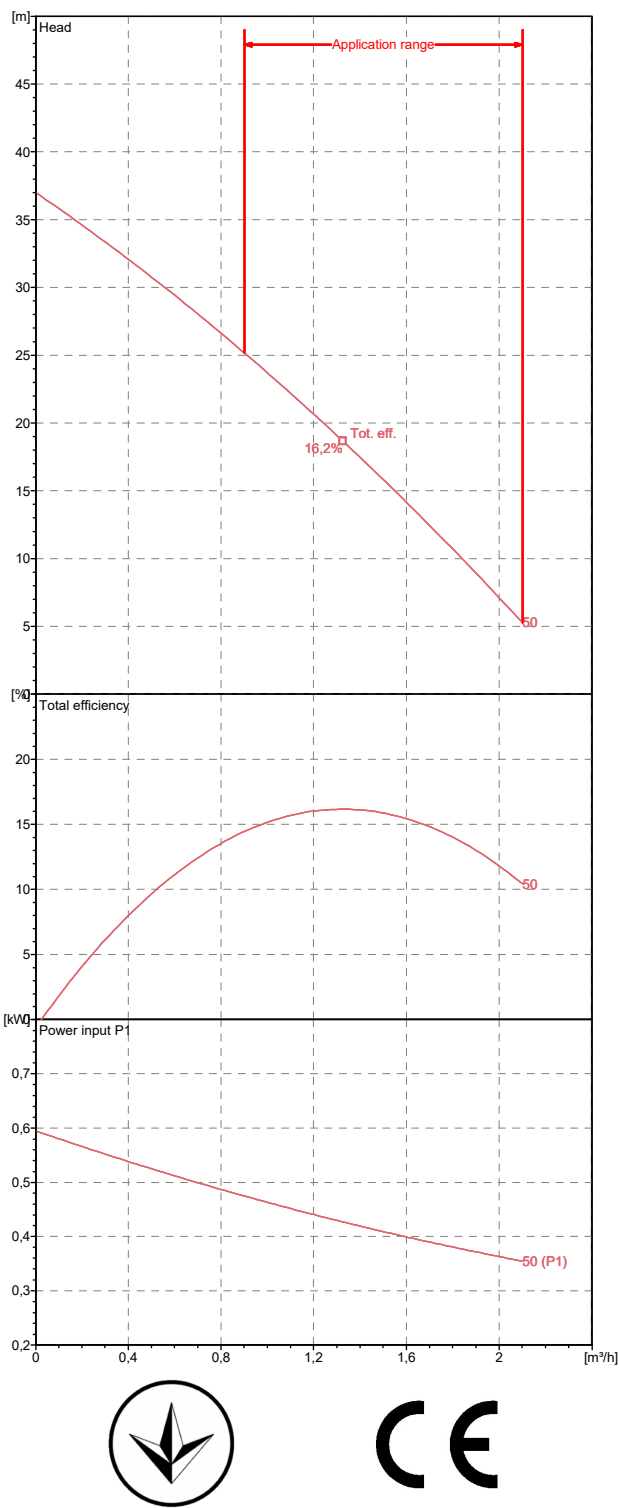
MOTOR

- The control motors are asynchronous, squirrel cage-type, closed, with external ventilation
- Incorporated motor protection and capacitor always on, for single-phase models
 - The motor protection for three-phase models must be installed by the customer.
- Equipment compliant with current standards should be used
- Class of insulation: F(Class B per Basic 50) -service:S1-
 - Degree of protection IP 44
 - Terminal board protection: IP 54

		SEA LAND S.r.l.		CE	
(PD) ITALY		www.sea-land.it		MADE IN ITALY	
Type	ONDINA 50 T	16,176	%	Ø	
H	5 - 25	m	Q	2 m³/h	- 1 m³/h
Hmin	5.3	m	Hmax	35	m
P2		0,5	HP	0,37	kW
3~		230 - 400	V	50	Hz
µF		V	IP	44	P1
S/N		Ins.Cl.		F	2900
T. MAX FLUID.		35	°C	6.1	kg
Servizio continuo		Continuos duty			

Tolerance of curves to ISO 9906 - grade 3B

Guarantee point = Best Efficiency Point: QBEP= 1,33 m³/h HBEP= 18,7 m



Sea-land reserves the right to make changes without prior notice

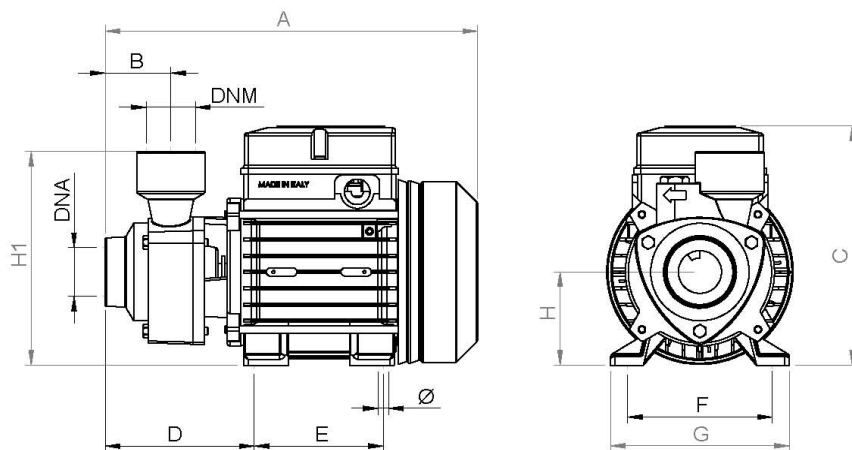
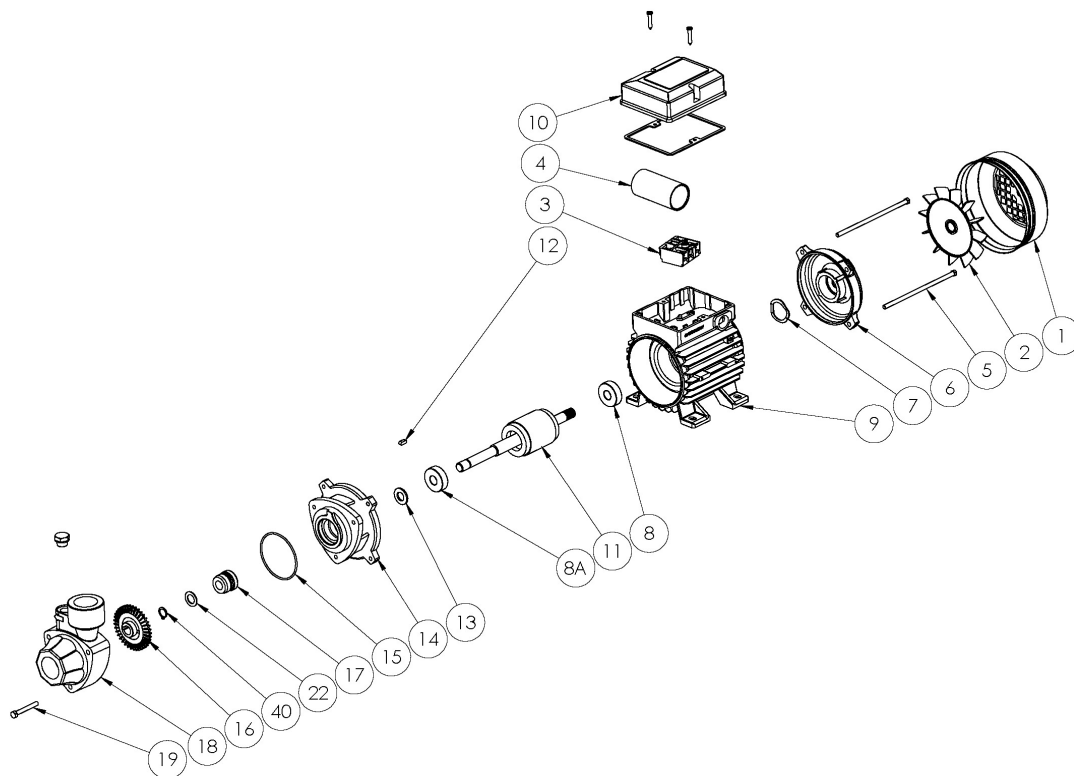
DIMENSIONAL DATA

ONDINA 50 T



Date: 2018-09-04

COD: 100052000



TIPO TYPE	DIMENSIONI [mm] DIMENSIONS [mm]										IMBALLO [mm] PACKING [mm]			PESO WEIGHT [kg]				
	A	B	C	D	E	F	G	Ø	H	H1	DNA	DNM	A		L	P		
ONDINA 50 T	256	50	156	115	80	100	120	7	63	145			1"	1"	180	280	250	6.1

Sea-land reserves the right to make changes without prior notice