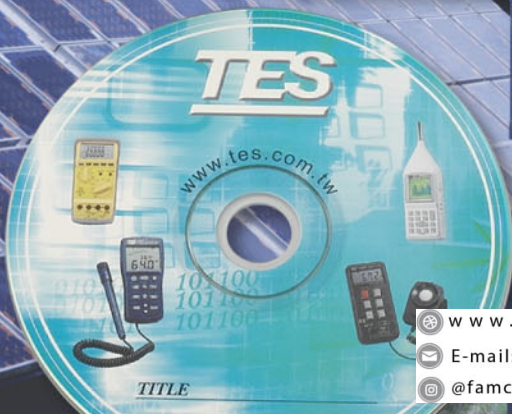
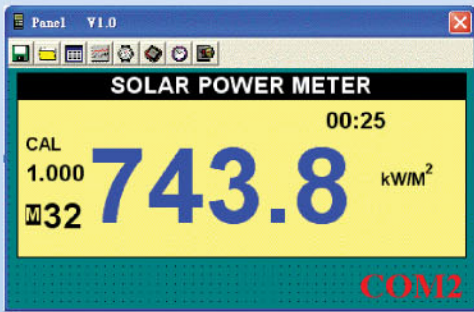


TES-1333 Solar Power Meter

Sourcing the best efficiency of Solar Energy Reception

- Wide spectral range
- W/m² and Btu / (ft² x h) units display
- MAX / MIN / AVG mode
- Solar energy measurement
- Current time setting function



1333/1333R SOLAR POWER METER



FEATURE:

- Wide spectral range.
- Excellent long term stability.
- Cosine corrected.
- Automatic transmission measurements.
- Select either power or transmission.
- Solar energy measurement.
- Current time setting function.
- User calibration factor setting function.
- End-mount light sensor.
- Select either W/m² or Btu / (ft² x h) units.
- Data Hold/MAX/MIN/AVG modes.
- Data Memory and Read function. (99 sets)
- Auto Data Memory and RS232 interface to PC. (TES-1333R)

APPLICATIONS

- Meteorology.
- Agriculture.
- Solar radiation measurement.
- Solar power research.
- Physics and optical laboratories.
- Solar transmission measurement.
- Identify high performance windows.

SPECIFICATIONS

Display	3-1/2 digits. Max. indication 1999
Range	2000 W/m ² 634 Btu / (ft ² x h)
Resolution	1 W/m ² 1 Btu / (ft ² x h)
Spectral response	400-1100nm
Accuracy	Typically within ± 10 W/m ² [± 3 Btu / (ft ² x h)] or $\pm 5\%$, whichever is greater in sunlight; Additional temperature induced error ± 0.38 W/m ² /°C [± 0.12 Btu / (ft ² x h)/°C] from 25°C
Angular accuracy	Cosine corrected <5% for angles < 60°
Drift	< $\pm 2\%$ per year
Calibration	User recalibration available
Over-Input	Display shows "OL"
Sampling Time	Approx. 0.4 second
Manu Data Memory and Read	99 sets
Auto Data Memory	32000 sets (TES-1333R)
Battery	4 pcs size AAA
Battery Life	Approx. 100 hours
Operating Temp and Humidity	0°C to 50°C (32°F to 122°F) below 80%RH
Storage Temp and Humidity	-10°C to 60°C below 70%RH
Weight	Approx. 165g
Dimension	111(L) x 64 (W) x 34(H) mm
Accessories	Carrying Case, Operation Manual, 4 pcs size AAA, RS232 cable (for TES-1333R), CD software (for TES-1333R)